

Understanding the Federal Lands Highways Grant Programs: FLTP, ERFO, and FLAP

Scott Strotman

Supervisory Environmental Planner, IWR

Allison Walker

Environmental Planner, IWR

“The views, opinions and findings contained in this report are those of the author(s) and should not be construed as an official Department of the Army position, policy or decision, unless so designated by other official documentation.”



**US Army Corps
of Engineers**®



U.S. ARMY

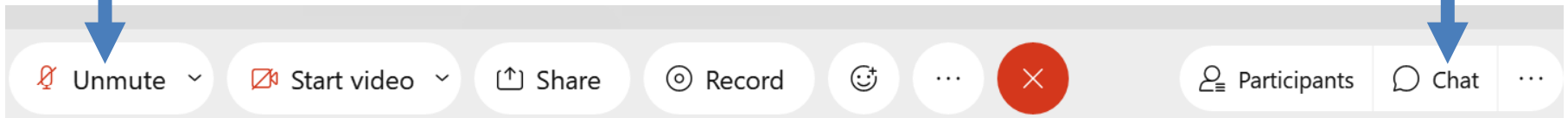
Understanding the Federal Lands Highways Grant Programs: FLTP, ERFO, and FLAP

- The webinar will begin at 2:00pm EST.
- To access the audio select “Call Me” – this is the preferred option to reduce feedback.
- If you are unable to connect via the “Call Me” feature,
 - Dial: 1-844-800-2712
 - Access: 199 565 7227#



Webinar Instructions

- All lines are muted.
- Submit questions or comments in the Chat Box to “Everyone”.
- The webinar is being recorded and will be shared following the meeting.



Speaker: Allison Walker

- Allison Walker joined the Corps of Engineers as a Student Conservation Association intern in 2006, and continued to work for the Corps in Nashville District first as a Geographer and then as a Natural Resource Specialist. Allison is currently serving USACE Institute for Water Resources (IWR) as an Environmental Planner and member of the Natural Resources Management Technical Support working with the Federal Highways Administration programs.
- Allison completed a B.S. in Environmental Science in 2005 from Montana State University, and an M.S. in Geographic Information Science in 2009 from Western Kentucky University.
- Prior to her assignment at IWR, Allison has worked with the Nashville Natural Resources Program with focuses on Master Plans, Environmental Stewardship Budgeting, VERS, OMBIL/NRM-Assessment, Partnerships and Volunteers, and GIS/GPS support to the NRM Program.
- These topics have afforded and opportunity to collaborate and learn from many colleagues at the Corps District and Project offices across the country as well as NRM Business Line Managers and the National NRM team at Headquarters, ERDC, and IWR teams.



Program Manager: Scott Strotman

- Scott Strotman joined the Corps of Engineers as Park Technician in 1986 at Lake Sidney Lanier in Atlanta, GA. Scott has worn many hats throughout his NRM career and has landed at eight different locations within USACE, including Hartwell Lake (SAS), Thurmond Lake (SAS), Rock Island District Office, Carr Creek Lake (LRL), SAD, HQ USACE and currently the Institute for Water Resources (IWR) as a Supervisory Environmental Planner supporting the NRM program. Prior to joining USACE Scott spent 6 seasons (1981-1986) as a Seasonal Park Ranger with the National Park Service (NPS).



- Scott completed his degree in Earth Science in 1981 from the University of North Carolina – Charlotte. From there he went straight to the NPS working at Cape Hatteras National Seashore, Shenandoah National Park and Big Cypress National Preserve.
- With USACE, in addition to being a Park Ranger for many years, Scott has served as Chief Ranger, Construction Representative & COR, Environmental Compliance Coordinator, Outdoor Recreation Planner, Project Manager, Assistant Operations Project Manager, ENS Business Line Manager (SAD) and National Recreation Program Manager (HQ USACE).
- These diverse positions and hats have afforded Scott the opportunity to collaborate and learn from many colleagues at the Corps District and Project offices across the country as well as NRM Business Line Managers and the National NRM team at Headquarters, ERDC, and IWR teams.

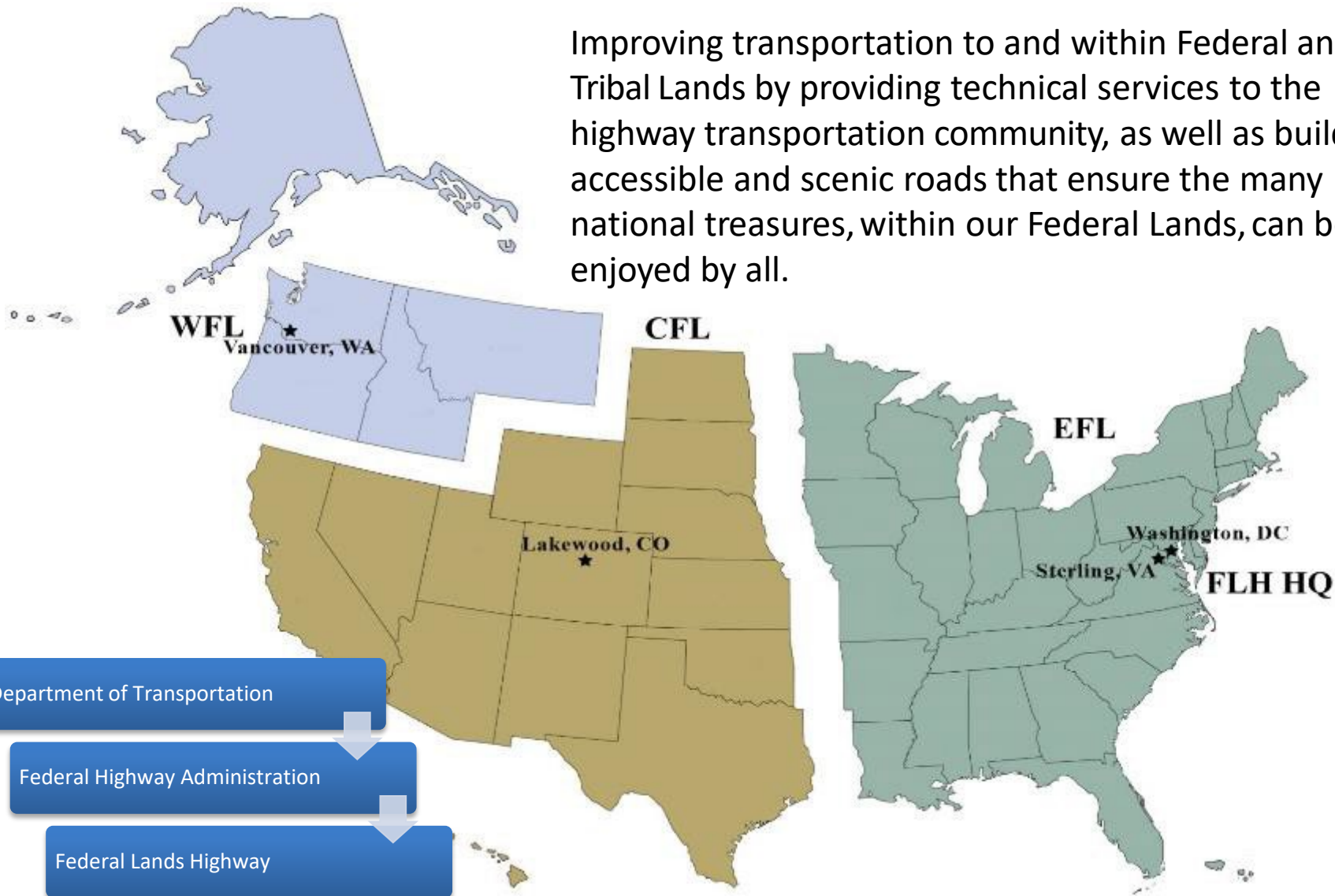


US Army Corps
of Engineers[®]

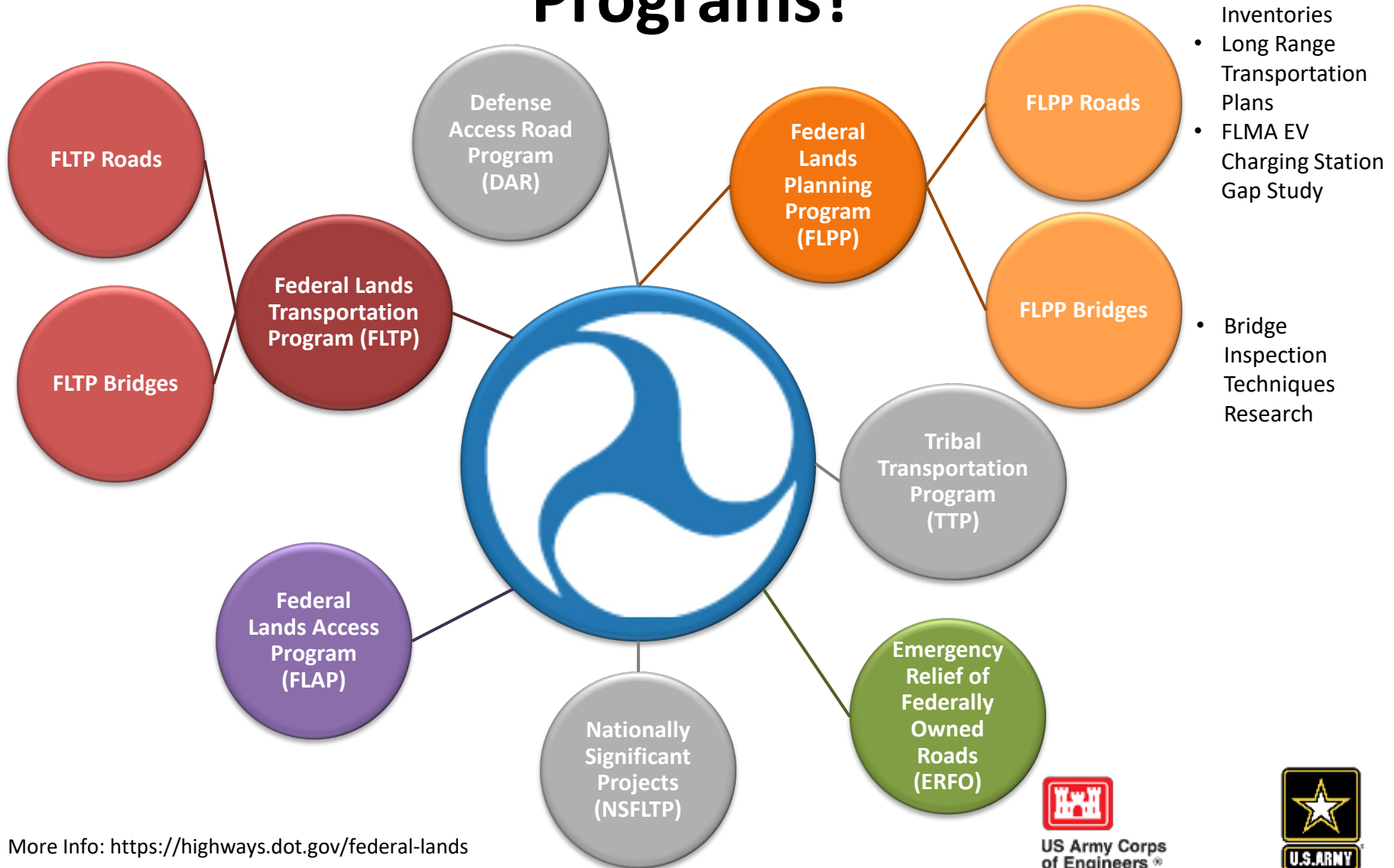


Federal Lands Highway Mission

Improving transportation to and within Federal and Tribal Lands by providing technical services to the highway transportation community, as well as building accessible and scenic roads that ensure the many national treasures, within our Federal Lands, can be enjoyed by all.



How Does USACE Benefit from FLH Programs?



- SCA Roads Inventories
- Long Range Transportation Plans
- FLMA EV Charging Station Gap Study
- Bridge Inspection Techniques Research

More Info: <https://highways.dot.gov/federal-lands>



History of Federal Transportation Funding

- Federal Aid Road Act of 1916 began this process
- Multiple subsequent highway and transportation funding acts, typically on a 3-5 year cycle
- Moving Ahead for Progress in the 21st Century (MAP-21) in 2012, FY13-FY15
- Fixing America's Surface Transportation (FAST) Act in 2015, FY16-FY20
- Infrastructure Investment and Jobs Act (IIJA), FY22-FY26



US Army Corps
of Engineers[®]



Federal Lands & Tribal Programs

National Funding Under the Infrastructure Investment and Jobs Act (FY22-FY26)

Federal Lands Program	Avg Annual Funding (\$M)*	Change from FAST Act (FY16-FY20)
Federal Lands Transportation Program National Park Service Fish & Wildlife Service Forest Service Remainder (competitive USACE, BLM, BOR & Independent Federal Land Managers)	\$ 439 \$ 346 \$36 \$26 \$31	+23.7%
Federal Lands Access Program	\$286	+10.0%
Nationally Significant Federal Lands and Tribal Projects (General Fund)	\$55 + up to \$300	+255%

* Under the IIJA, some programs increase in funding each year, the numbers presented are the average over the 5 year life of the IIJA.



Federal Lands Transportation Program

- The IJA reserves the majority of FLTP funding for designated Federal agencies:
 - \$332-\$360 million per fiscal year for the National Park Service;
 - \$36 million per fiscal year for the U.S. Fish and Wildlife Service; and
 - \$24-\$28 million per fiscal year for the U.S. Forest Service
- FHWA will allocate the remaining \$31M FLTP funds competitively among (minimum \$7M to each):
 - The Bureau of Land Management;
 - The U.S. Army Corps of Engineers;
 - The Bureau of Reclamation; and
 - Independent Federal agencies with natural resource and land management responsibilities (such as The Presidio).



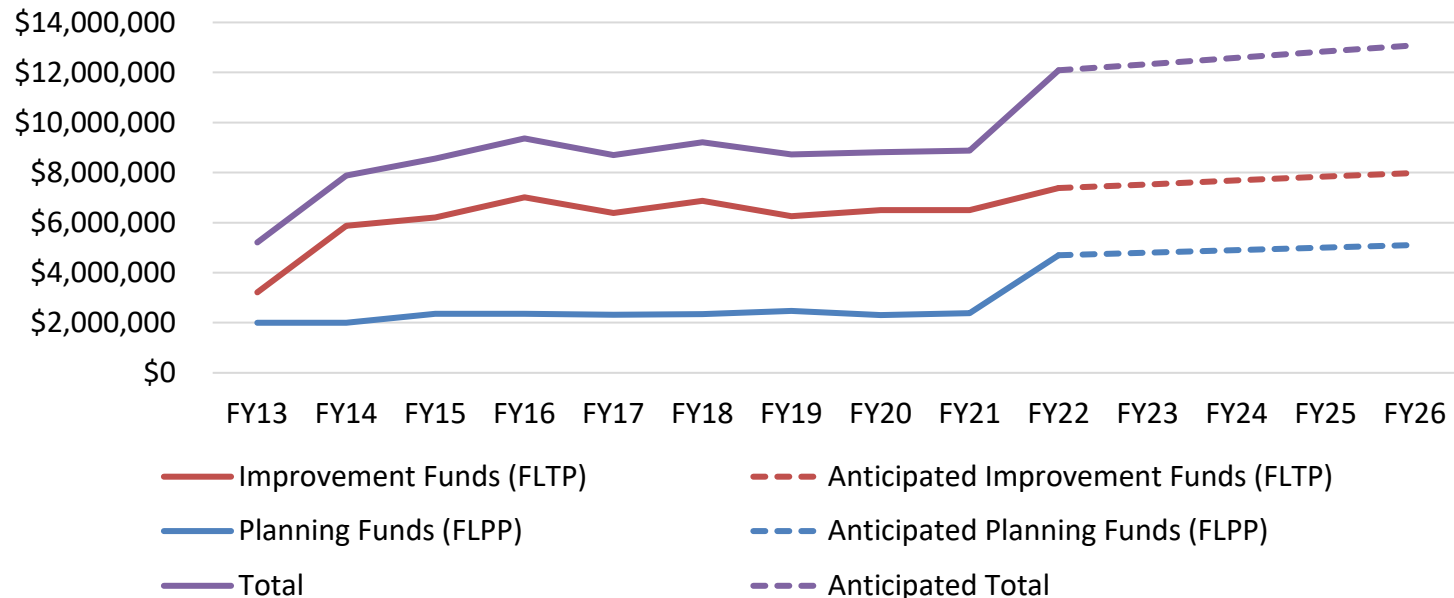
US Army Corps
of Engineers[®]



FLTP - USACE Implementation

- Road/parking improvements at highly visited recreation areas to address backlog maintenance and improve public access and use of areas.
 - ▶ Road/parking projects not generally competitive in USACE budget process (Though additional funding available through IJA)
- Bridge program work for compliance with NBIS and FHWA Guidelines. FLTP allows improvements to bridges at CW projects that support public safety, recreation access and regional economies.

FLTP and FLPP USACE Funding Levels



Recreation Roads FLTP Activity

- FLTP Accomplishments FY13-20:



77

miles of roadway improved



47

bridges repaired



3 million

visitors provided safer access

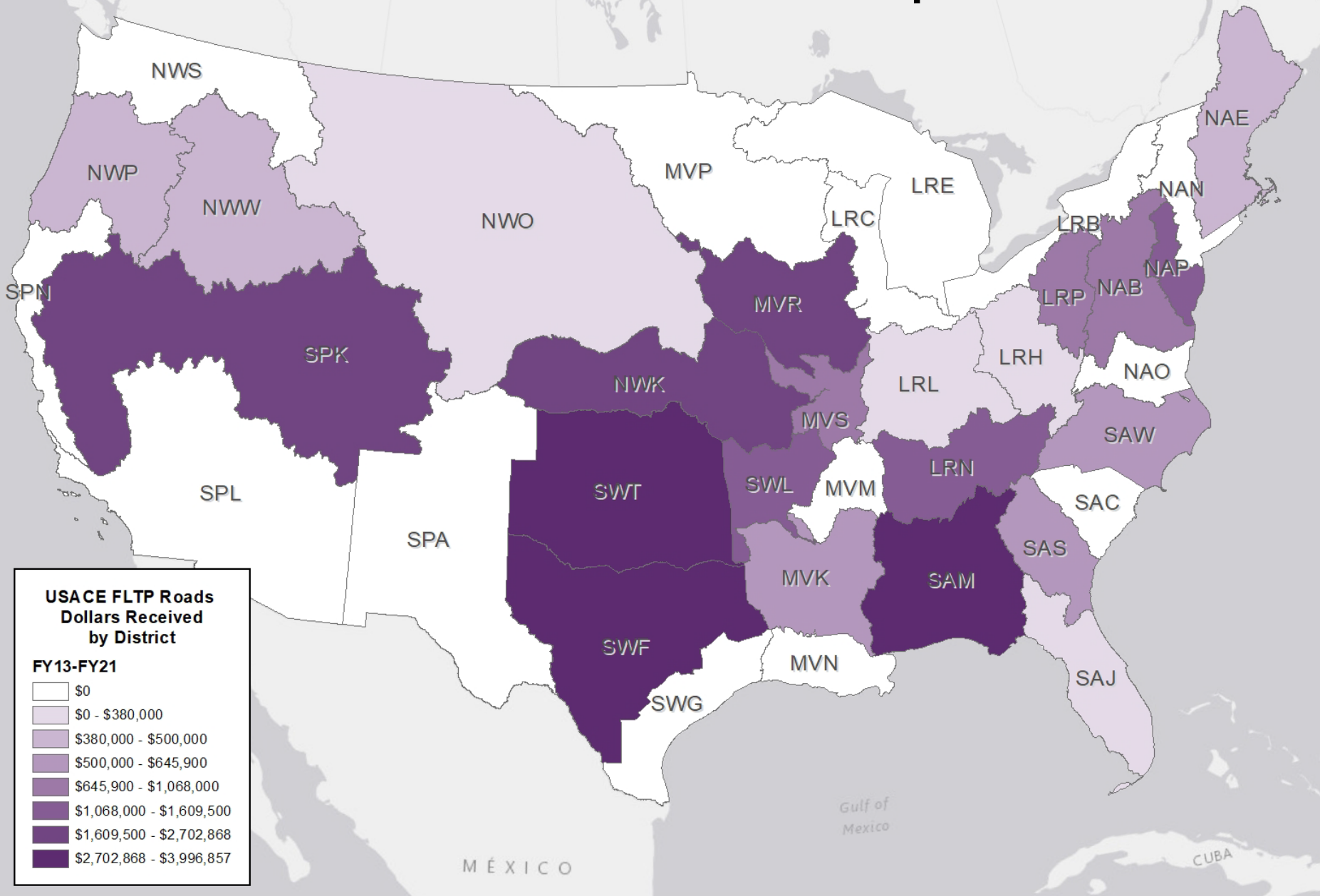


178

bridge inspections conducted annually

- FY22 & Beyond - National Implementation, IIJA
- From FAST Act to the IIJA:
 - Minimum funding for agencies that compete for funds (USACE, BOR, BLM, others) of \$7M
 - Emphasis on designs that minimize runoff and heat generation
 - If replanting is needed to use native plant materials to the maximum extent practical

FLTP Funds Heat Map



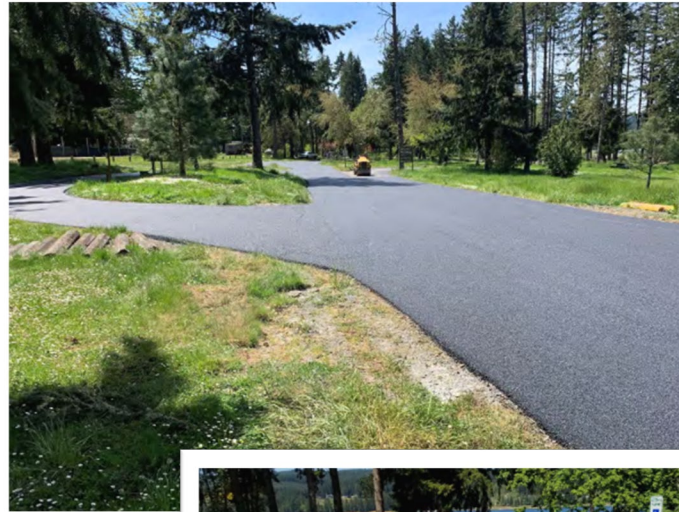
Recent Success

NWP - Cottage Grove Lake – Pine Meadows

Before

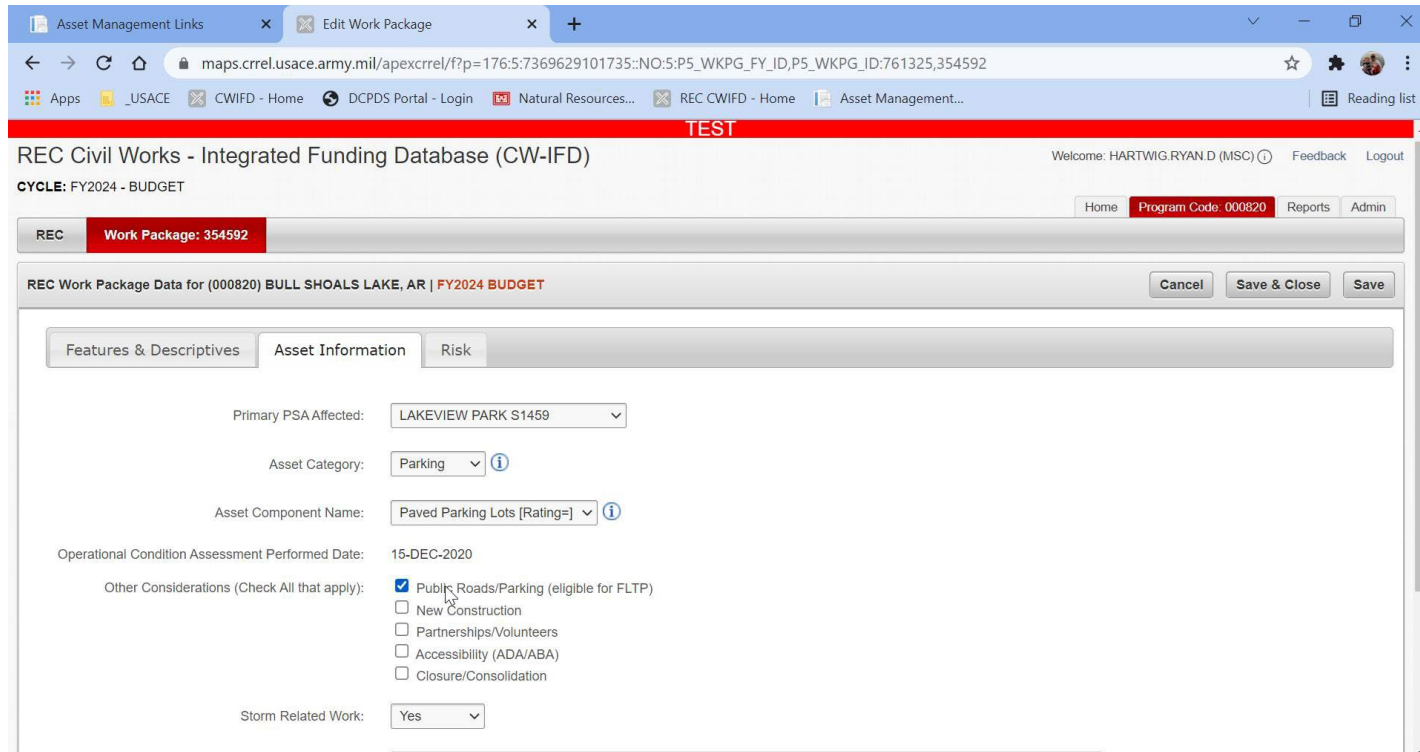


After



How to Apply for FLTP Funds

Submit a package through the Rec Budget Process



The screenshot shows a web browser window with the URL `maps.crrel.usace.army.mil/apexcrrel/?p=176:5:7369629101735::NO:5:P5_WKPG_FY_ID,P5_WKPG_ID:761325,354592`. The page title is "REC Civil Works - Integrated Funding Database (CW-IFD)" and the cycle is "CYCLE: FY2024 - BUDGET". The user is logged in as "HARTWIG.RYAN.D (MSC)". The page displays the "Work Package: 354592" and "REC Work Package Data for (000820) BULL SHOALS LAKE, AR | FY2024 BUDGET". The "Asset Information" tab is active, showing the following fields:

- Primary PSA Affected: LAKEVIEW PARK S1459
- Asset Category: Parking
- Asset Component Name: Paved Parking Lots [Rating=]
- Operational Condition Assessment Performed Date: 15-DEC-2020
- Other Considerations (Check All that apply):
 - Public Roads/Parking (eligible for FLTP)
 - New Construction
 - Partnerships/Volunteers
 - Accessibility (ADA/ABA)
 - Closure/Consolidation
- Storm Related Work: Yes

Packages will be ranked by OCA Score, Economic Impact, Visitation, Description and Justification to create a 5-year plan to submit to DoT

Annual obligation plans submitted to DoT are based on rank and what fits in to the FLTP budget for the year

Federal Lands Access Program

- The goal of the Federal Lands Access Program (Access Program or FLAP) is to improve transportation facilities that provide access to, are adjacent to, or are located within Federal lands (outgranted).
 - Emphasis on high use sites and economic generators
- The Access Program supplements State and local resources in 50 States, DC and Puerto Rico
- Compliments other Federal Programs
 - ▶ Federal Lands Transportation Program
- **State or Local Governments are eligible applicants**
- NEW under IIJA: No applicant match required.



FLAP Eligible Activities

Transportation planning, research, engineering, preventative maintenance, rehabilitation, restoration, construction, and reconstruction of transportation facilities located on, adjacent to, or that provide access to, Federal lands, and:

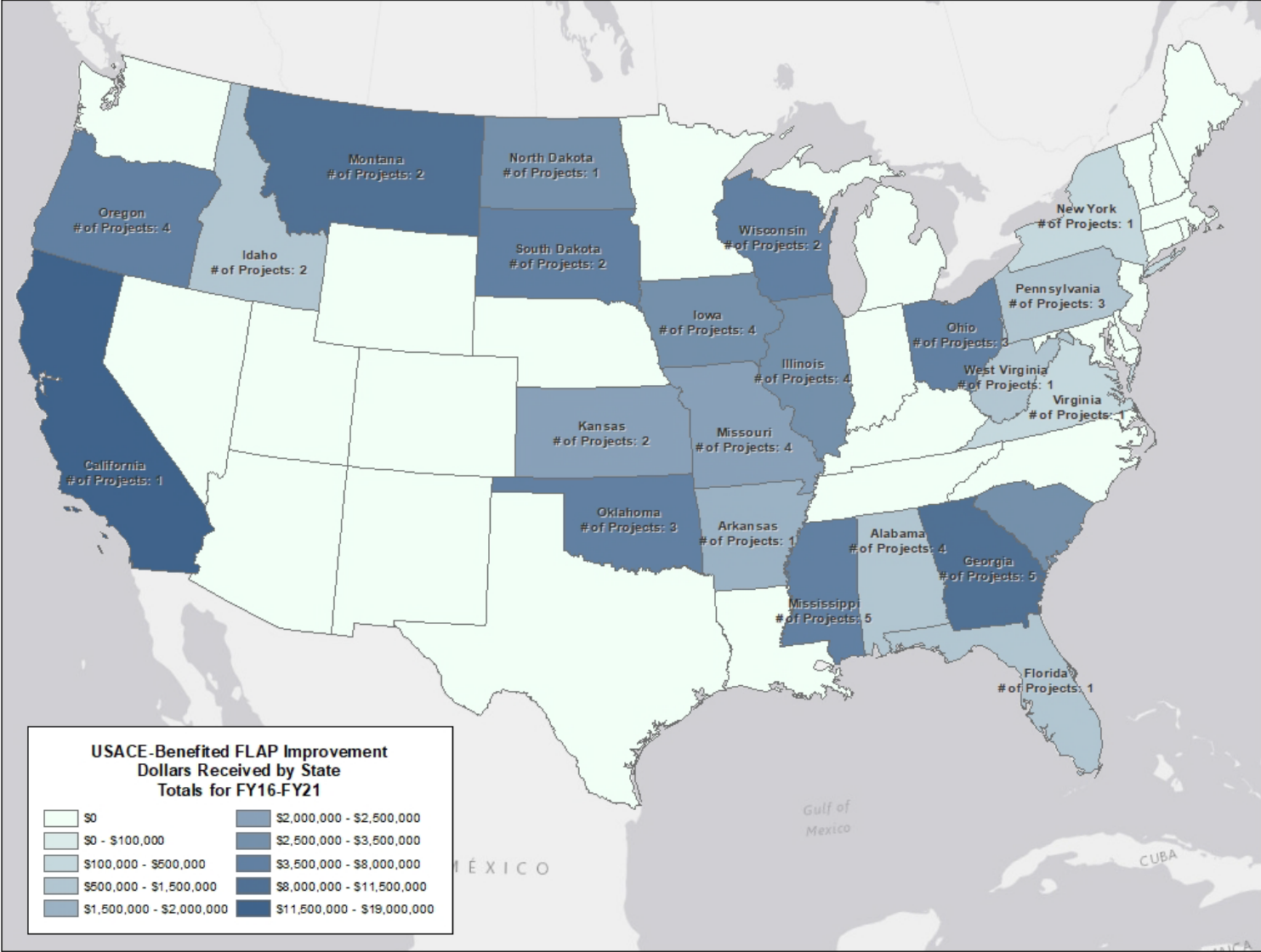
- ▶ Adjacent vehicular parking areas
- ▶ Acquisition of necessary scenic easements and scenic or historic sites
- ▶ Provisions for pedestrians and bicycles
- ▶ Environmental mitigation in or adjacent to Federal land to improve public safety and reduce vehicle-caused wildlife mortality while maintaining habitat connectivity
- ▶ Construction and reconstruction of roadside rest areas, including sanitary and water facilities, and
- ▶ Transit facilities (stops, shelters, buses, etc.)



US Army Corps
of Engineers[®]



FY16-FY21 FLAP Funds to USACE Partners By State



Your Role with the FLAP Program

- Share information about the program with your State/County/Local partners
- If you have a partner applying for grant, provide a statement of support
 - Include economic benefits of the region/PSA, any condition or public feedback requests for improvement
- District or Regional PoCs may be asked to participate in ranking discussions
- Use your Master Planning process to have conversations with partners about transportation improvement.

North Dakota Federal Lands Access Program: Proposed Project FLMA Support Form

Support Form - Acknowledgement of Coordination with Federal Land Management Agency (FLMA)

By signing this support form, the FLMA representative certifies that the projects provide access to, is adjacent to, or are located within a Federal recreation site or Federal economic generator. Please fill in all fields. This form can be signed and submitted electronically or be printed, signed, scanned and submitted electronically. Letters of support are highly recommended in addition to this signature page.

1. Project Title (From Application): _____

2. Applying Agency (From Application): _____

3. Federal Land Management Agency (FLMA) supporting project: _____

4. Name of FLMA representative: _____

5. Title: _____

6. Signature: _____ 7. Date (MM/DD/YYYY):

--	--	--	--	--	--	--	--	--	--	--	--	--	--	--	--	--	--	--	--	--

8. E-mail: _____ 9. Telephone: _____ ext. _____

10. Comments on the proposed project. (Why is the project significant or critical access for your federal lands?):

11. Please explain how your unit is ready to support the improved, new, and/or increased access. (E.g. if the applicant is building a multimodal path to the entrance, does the unit have existing or proposed infrastructure in place that will support this type of access?)

12. Will Federal Land Transportation Program (FLTP) funds be provided as match for this project? Are there any FLTP projects adjacent to this project?

13. FLMA Point-of-Contact (POC) Name: _____

14. POC Telephone: _____ ext. _____ 15. POC e-mail: _____

Laurie Miskimins, Transportation Planner
Central Federal Lands Highway Division
12300 West Dakota Ave, Ste 380E, Lakewood, CO 80228
Phone: 720-963-3455 | laurie.miskimins@dot.gov

Additional information on the Federal Lands Access Program is located at <https://highways.dot.gov/federal-lands/programs-access/nd/>

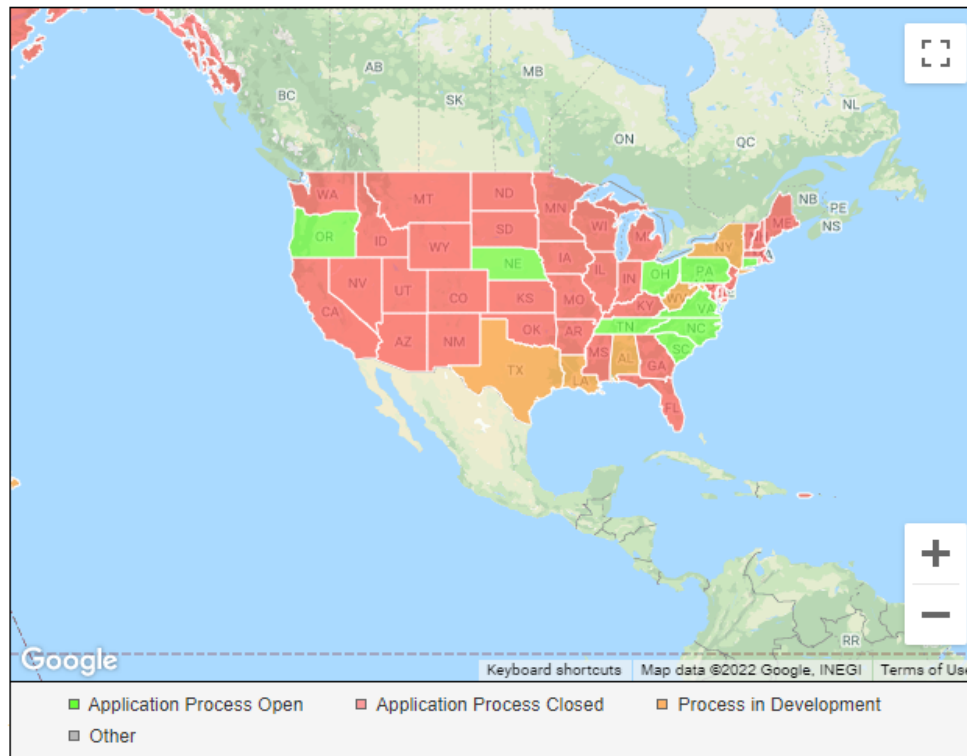
Federal Lands Access Program

<https://flh.fhwa.dot.gov/programs/flap/>

Status of the Call for Projects

To learn more about the call for projects status, points of contact or to access a link to a State FLAP webpage, click on a state in the map below.

** Figures listed are annual allocation estimates per fiscal year and subject to availability of funds.*



FLAP Accomplishment Reports

- [FY 2013 - FY 2015 FLAP Accomplishment Reports](#)
- [FY 2018 FLAP Accomplishment Reports](#)

Program Managers

Raju Mooney

National Program Manager
Office of Federal Lands Highway
Phone: (703) 404-6304
Email: Rajashree.Mooney@dot.gov

Contact Us

Office of Federal Lands Highway

United States Department of Transportation
Federal Highway Administration
1200 New Jersey Avenue, SE
Washington, DC 20590
United States
flh.webmaster@dot.gov

Phone: 202-366-9494

Share



Emergency Relief for Federally Owned Roads

- Established to assist federal agencies with the repair or reconstruction of public federal lands transportation facilities, and other federally owned public roads, which are found to have suffered serious damage by a natural disaster over a wide area or by a catastrophic failure*.
 - Permanent repairs are undertaken after the occurrence of the disaster to restore facilities to their pre-disaster conditions. Prior approval required.
 - Intent notification required step (within 45 days of event)
 - Actual funding provided or based on eligibility and annual ERFO fund request process (can involve congressional authorizations)

*a natural disaster over a wide area, such as by a flood, hurricane, tidal wave, earthquake, severe storm, wildfire, or landslide; or catastrophic failure from any external cause.



US Army Corps
of Engineers[®]



Emergency Relief for Federally Owned Roads... *Continued*

- Unlike FLTP, a single event can provide millions in funding for improvements
- Minimum Funding Thresholds
 - \$700,000 per event
 - \$5,000 per site repaired
- Online training available
 - <https://flh.fhwa.dot.gov/programs/erfo/training/>
 - ERFO staff also willing to offer regional training sessions in person (pending minimum class sizes)
 - ERFO Disaster Assistance Manual
<https://highways.dot.gov/sites/fhwa.dot.gov/files/docs/federal-lands/programs/erfo/8521/erfo-2015.pdf>
- <https://flh.fhwa.dot.gov/programs/erfo/>



US Army Corps
of Engineers ®



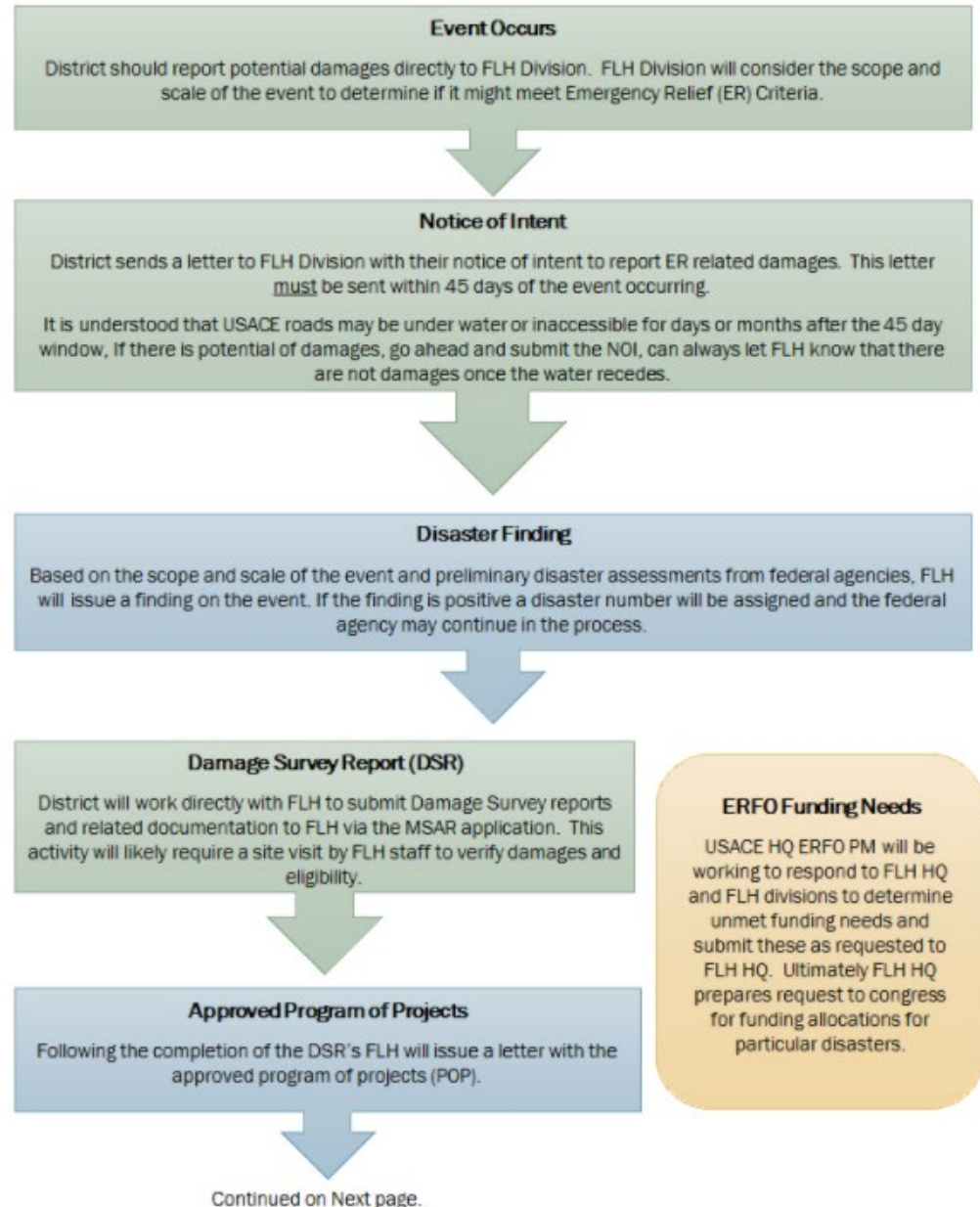
ERFO Process Flow Chart

ERFO-USACE Flow Chart on the ERFO Sharepoint

Based on the ERFO Disaster Assistance Manual, 2014

ERFO Flow Chart

District Action Green, FLH Action Blue, USACE ERFO PM Yellow



Emergency Relief for Federally Owned Roads

(ERFO) <https://highways.dot.gov/federal-lands/programs/erfo>

On December 4, 2015, the Fixing America's Surface Transportation Act of 2015 (the "FAST Act" or "Highway Funding Act") was signed into law replacing MAP-21. Please review below the summary of ERFO Program changes brought about by the FAST Act.

The *Emergency Relief for Federally Owned Roads Program*, or ERFO Program, was established to assist federal agencies with the repair or reconstruction of tribal transportation facilities, federal lands transportation facilities, and other federally owned roads that are open to public travel, which are found to have suffered serious damage by a natural disaster over a wide area or by a catastrophic failure.

The intent of the ERFO program is to pay the unusually heavy expenses for the repair and reconstruction of eligible facilities.

The ERFO program is **not** intended to cover all repair costs but rather supplement Federal Land Management Agency (FLMA) repair programs. Repairs are classified as either emergency or permanent repairs.

Emergency repairs are those repairs undertaken during or immediately after a disaster to restore



Contact Information

Sergio Mayorga

ERFO National Program Manager
Office of Federal Lands Highway
Location: Washington, DC,
Ashburn, VA
Cell: (202) 853-0810
Office: (703) 404-6247
Email: sergio.mayorga@dot.gov

J. "Eric" Wright

ERFO Coordinator
Eastern Federal Lands Highway Division (EFL)
Location: Ashburn, Virginia
Phone: (571) 434-1547
Email: john.wright@dot.gov

Lorell Duteil

ERFO Coordinator
Central Federal Lands Highway Division (CFL)
Location: Lakewood, Colorado
Phone: (720) 963-3425
Email: lorell.duteil@dot.gov

Steve Hinz

ERFO Coordinator
Western Federal Lands Highway Division (WFL)
Location: Vancouver, Washington
Phone: (360) 619-7532
Email: steven.hinz@dot.gov

POCs for More Information

- **Federal Lands Transportation Program**
 - Scott Strotman, FLTP Program Manger, Roads
 - Discuss with MSC Recreation BLM regarding projects submitted previously
- **Federal Lands Access Program**
 - See FLH website for FLH Division FLAP Manger/Coordinator
- **Emergency Relief for Federally Owned Roads**
 - See FLH website for FLH Division ERFO Coordinator
 - <https://highways.dot.gov/federal-lands/programs/erfo>
- **DOT Main Page**
 - <https://highways.dot.gov/federal-lands>

Questions?



- Before

FLTP Improvement Project in a
USACE Recreation Area



- During



- After

In the Comments:

What resources would be helpful to you in helping you take advantage of FHWA Programs?



US Army Corps
of Engineers[®]



Acronyms

- ERFO – Emergency Relief for Federally Owned Roads
- FHWA – Federal Highways Administration
- FLAP – Federal Lands Access Program
- FLH – Federal Lands Highway
- FLPP – Federal Lands Planning Program
- FLTP – Federal Lands Transportation Program
- NBIS – National Bridge Inspection Standards



US Army Corps
of Engineers ®

